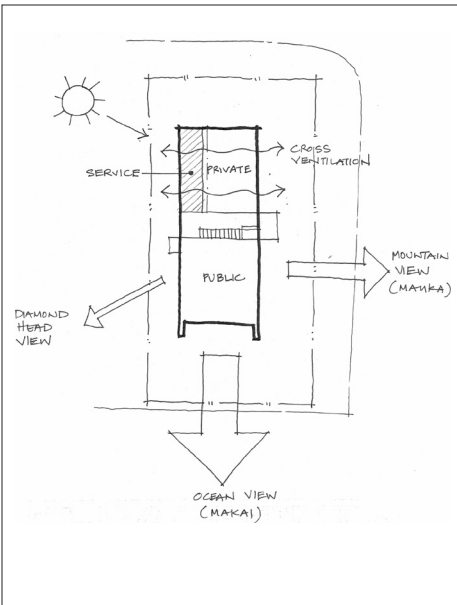


MAUNALOA HOUSE

Honolulu, Hawaii



SITE

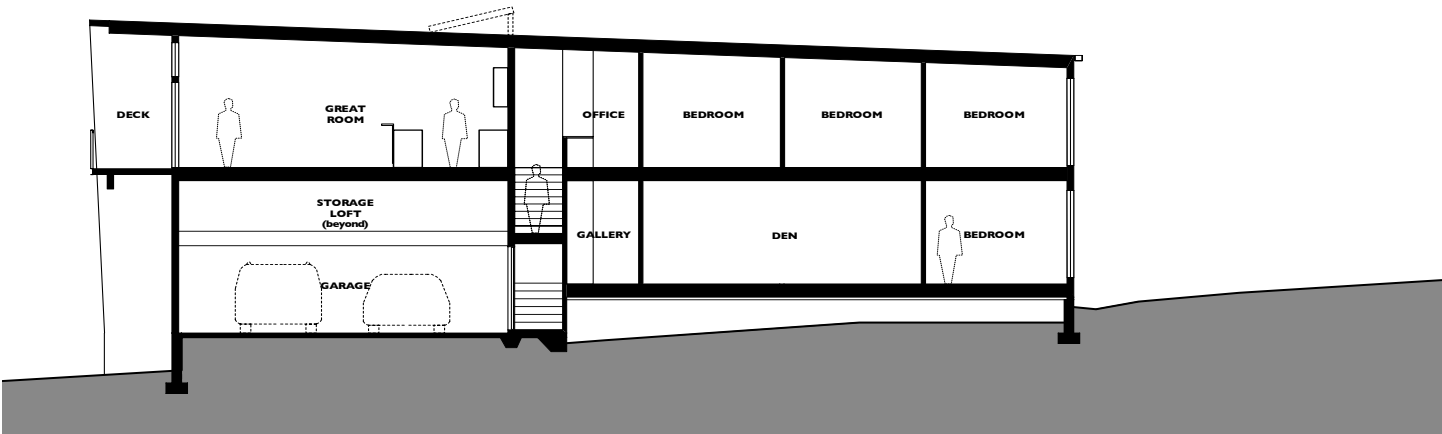
A corner lot in a residential neighborhood with ocean, mountain, and Diamond Head views from an upper floor. The tropical climate dictated the need for solar shading and cross ventilation. An existing one-story house was to be relocated to the other side of the island in preparation for site development.

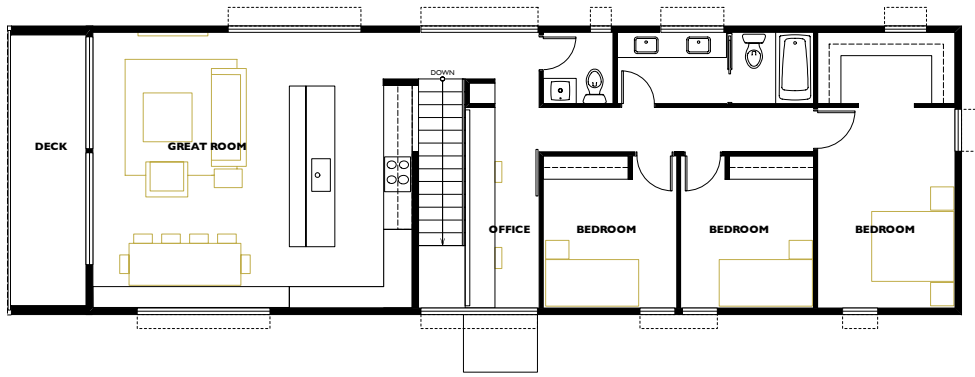
PROGRAM

A shared residence for two sisters – one single and one with a family. Each sister was to have a separate sleeping wing, while the entire household was to share the kitchen/dining/living great-room and deck. A small office for a home business and an additional storage area were also required.

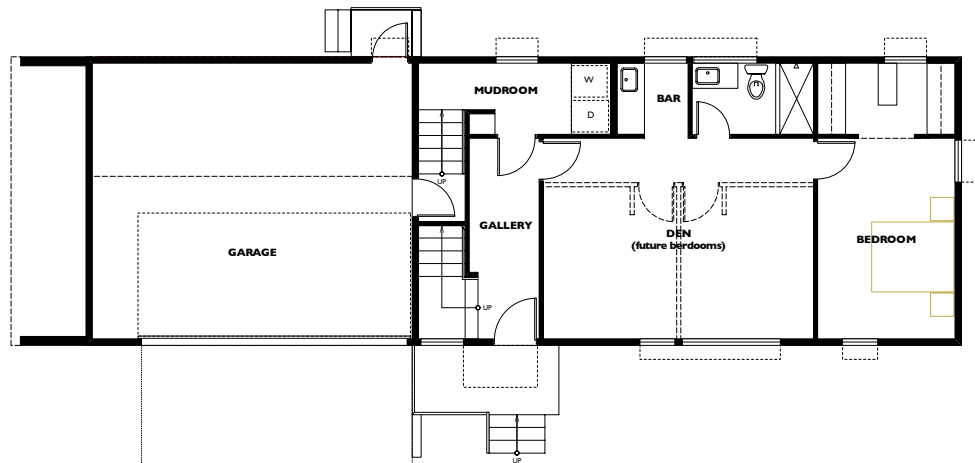
SOLUTION

The shared great-room is located above the garage and oriented to take advantage of the views. The entry gallery, stair, and home office form a gasket between the shared and private zones of the house. The stacked sleeping wings allowed for an efficient design, while the baths and closets buffer the bedrooms from the adjacent neighbor, as well as the hot afternoon sun. The design reflects the constraints and opportunities of the local climate in a number of other ways as well. The long shed roof (with solar hot water panels) efficiently carries water from sudden downpours to a pair of oversized downspouts. Bent aluminum plates offer sun and rain protection at windows and doors. Operable windows in the great-room and bedroom wings were designed to allow for natural cross ventilation from prevailing winds, and a stack effect helps cool the entry and home office.





UPPER FLOOR PLAN



MAIN FLOOR PLAN

