

# BOAT BAY HOUSE

Seattle, Washington



## SITE

A major alteration of an existing house on a sloping site with a panoramic eastern view of Seward Park, Lake Washington, and Mount Baker. Contrasting the views to the east, the western portion of the site offers more introspective opportunities.

## PROGRAM

The owners are avid gardeners and wanted the house to be integrated with the landscape while taking advantage of the sweeping view of Lake Washington. The master suite had to share a level (as well as the lake view) with the main living spaces, yet remain private and separate. A flexible use guest suite – a space they could utilize daily or close off for long term guests – was also desired.

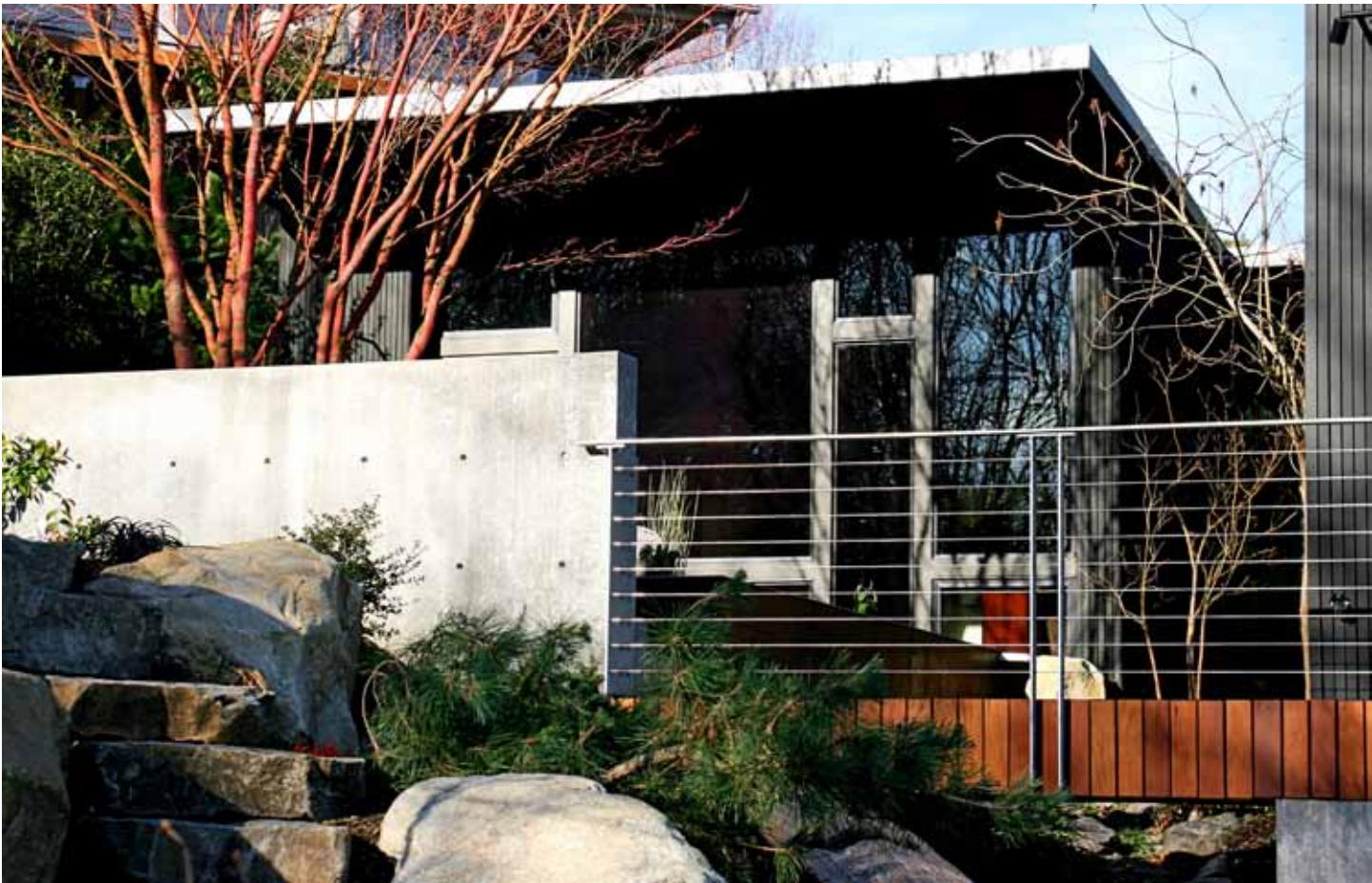
## SOLUTION

The living room fireplace – a freestanding “monolith” – serves as the anchor and pivot point for the house. It marks the entrance to the main living space, forms a baffle to the sitting room and master suite, and is the low point from which the butterfly roof opens up. At the high end of the roof, a generous deck extends the interior space to the outside. As a counterpoint to this airiness, the guest suite is more intimate and darkly hued opening out to a private courtyard and water feature. Large trees were transplanted from the owners’ previous home, creating the sense of a mature garden.

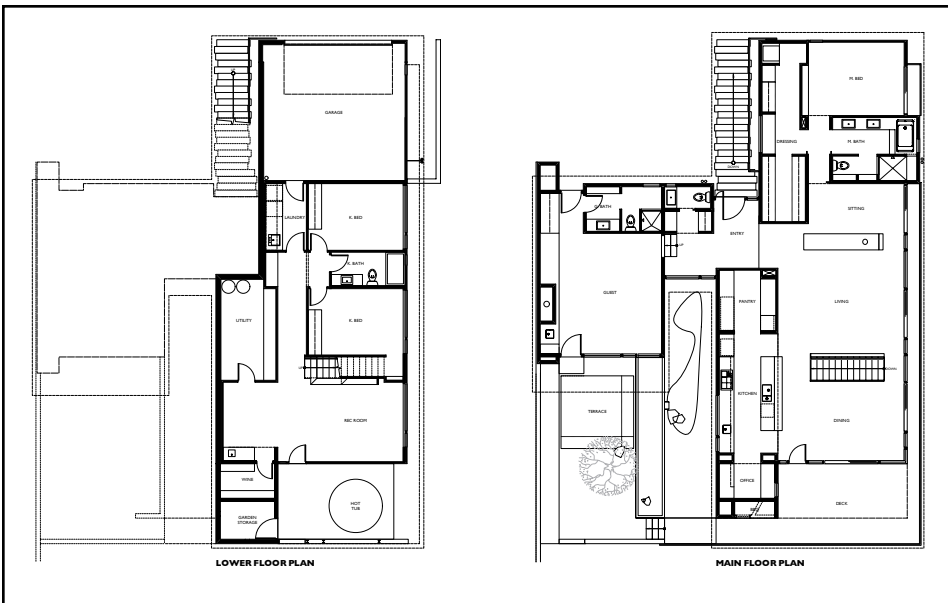






















**AWARDS & PUBLICATIONS**  
4-Star Rating – BuiltGreen  
Seattle Tour of Architects, 2012