

MEADOW CREEK HOUSE

Seattle, Washington



SITE

A large sloping site with western views to Puget Sound and the Olympic Mountains. Driveway access was limited to its pre-existing location by the topography. A small stream and hillside delineate the southern edge of the property.

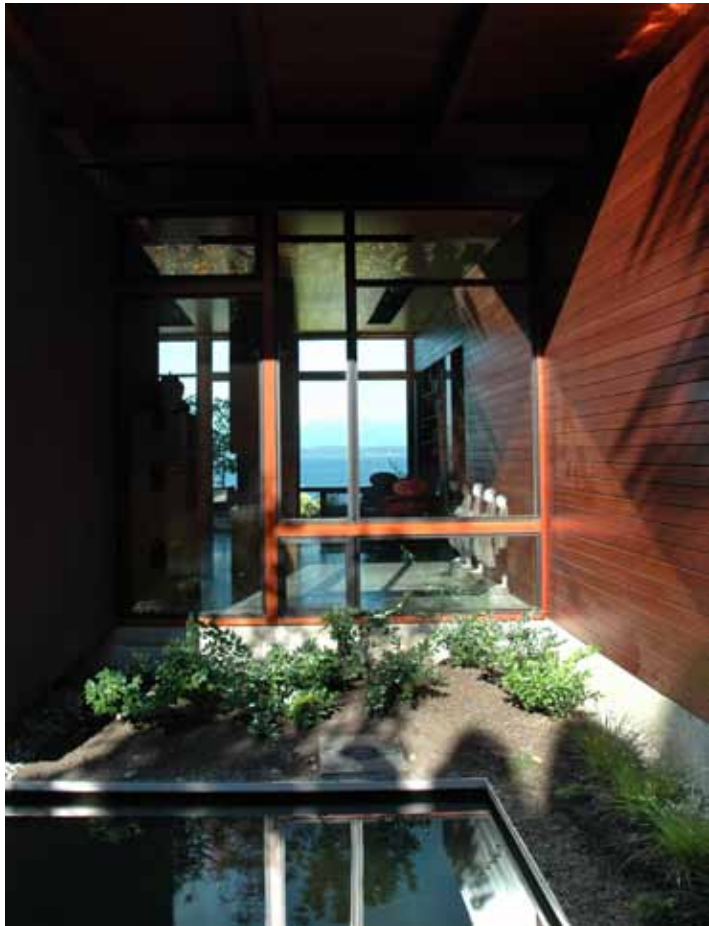
PROGRAM

A single family residence facilitating indoor/outdoor living, offering direct connection to the garden while taking advantage of the dramatic view. The house was to accommodate both contemporary and Asian furnishings, as well as a handmade bubinga dining room table and chairs. The building height had to be minimized because covenants stipulated that new construction must minimize the impact upon existing views from surrounding neighbors. Similar requirements regarding trees necessitated that the building itself—not landscaping—offer privacy protection from neighbors to the north and south.

SOLUTION

Site fit, program, construction process, and neighborhood design review were all addressed by a shallow vaulted pavilion roof under which linear service forms subdivide and direct the living spaces towards the gardens and view. The steel and PSL structure minimized structure height and was prefabricated offsite for rapid onsite assembly. Once the roof was sheathed, the pavilion served as rain protection for subsequent conventional framing work below. The primary spaces open to both the entry garden to the east and the restored meadow and views to the west. These spaces are defined by the stucco, wood rainscreen, and Corten steel clad service forms, the northernmost of which (the master bath and closet) screens the living spaces and terraces from the adjacent neighbor.









AWARDS

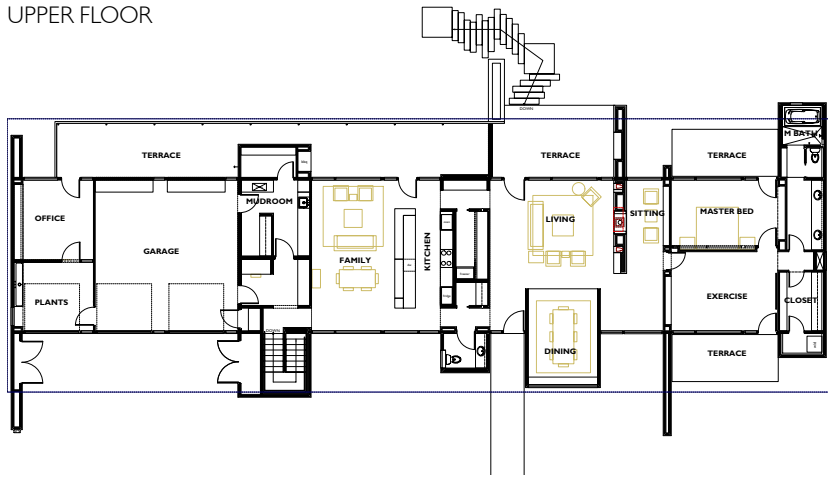
Merit Award – AIA Northwest and Pacific Region
2007 Awards
Merit Award – AIA Seattle 2006 Honor Awards
for Washington Architecture

PUBLICATIONS

“The New 100 Houses x 100 Architects” by
Robyn Beaver, 2007
“Meadow Creek House” by Nick Allen, Modern
Residential Design (modresdes.blogspot.com),
2008



UPPER FLOOR



LOWER FLOOR

